



ROYAL COLUMBIAN HOSPITAL REDEVELOPMENT
AN UPDATE FOR THE JIM PATTISON FOUNDATION

JUNE 2018



ROYAL COLUMBIAN
Hospital Foundation



When an emergency happens, every single second counts. A senior suffering a major cardiac arrest, arriving unconscious and in distress at hospital. An accident victim, gravely injured and rushed here by Air Ambulance. A woman in labour and in renal failure, with two lives now in the balance.



AT ROYAL COLUMBIAN, TIME IS OUR MOST CRITICAL COMMODITY.

Royal Columbian Hospital delivers critical and emergency care to fully one-third of the province—striving always for positive patient experiences that advance recovery, for a quick return to family, life, and community.

Now, with the total redevelopment and expansion of BC's longest-serving hospital, the moment to advance our critical care future has arrived.

From the beginning, Royal Columbian Hospital (RCH) has stood at the heart of health care in British Columbia. Created by visionary pioneers to provide compassionate care to those building a new province, we have participated in the social and economic changes of BC since 1862.

Today, we are one of BC's busiest hospitals, serving a population of more than 1.8 million people—from Burnaby to Boston Bar. We are a regional referral hospital for cardiac, trauma, neurosciences, high-risk maternity and neonatal intensive care.

WHY RCH AND WHY NOW?

Trauma Care

The only Level 1 Trauma Centre for the Fraser Health Region, Royal Columbian Hospital serves a critical role in safeguarding the health of almost 2 million residents. With three Level 1 Trauma Centres in the province, Royal Columbian is vital not only to our local communities but to the province as a whole.

A Level I Trauma Centre provides the highest level of surgical care to trauma patients. Being treated at a Level I Trauma Centre increases a seriously injured patient's chances of survival by an estimated 20 to 25 percent. These hospitals have a full range of specialists and equipment available 24 hours a day and admit a minimum required annual volume of severely injured patients. In addition, these trauma centres must be able to provide care for pediatric patients.

Cardiac Care

The cardiac care team at Royal Columbian is the busiest in the province, performing high volumes of open heart surgery and interventional procedures like angioplasty and electronic heart ablations--two examples of procedures that mean fewer open heart surgeries in order to treat cardiac conditions.

Royal Columbian Hospital sees the most critical and complex of cases, many of them unscheduled emergencies – making the ability to be responsive key to successful treatment. Those suffering from heart attacks are regularly rushed straight to Royal Columbian, at times arriving by air ambulance for immediate emergency care. As the only interventional cardiology centre in Fraser Health, Royal Columbian receives patients from all 11 other regional hospitals. When the need outpaces the capacity, it has a significant impact on the entire health care network – causing congestion at area hospitals and impacting patient care.

Advances in technology and surgical methods mean there is more equipment in the procedure suites today than 10 years ago. Imaging equipment in the operating room allows for surgeons to reach diagnosis and provide treatment in a single intervention, and minimally-invasive methods reduce risks to patients and increase recovery time. The current procedure rooms are cramped; more space is needed to accommodate these pieces of life-saving equipment.

Despite the challenges, Royal Columbian continues to provide the highest level of care. “One of the defining characteristics of Royal Columbian is the can-do attitude and the excellent level of patient care that we deliver” says Dr. Gerald Simkus, Chief of Cardiac Services.



High Risk Maternity and Neonatal Intensive Care Unit

Royal Columbian Hospital cares for maternity patients at high risk of complications and delivers over 3,000 babies a year. Our NICU cares for the sickest and most premature babies, and is consistently recognized as having among the best survival rates in Canada. The obstetrical team is seeing success with babies born as early as 22 weeks.

Neuroscience

Royal Columbian is the only hospital in the Fraser Health Region to provide care for spinal injuries, brain tumors, stroke and aneurysms. We do more emergency brain surgeries than any other hospital in BC.

Royal Columbian plans to engage in more advanced stroke care and become a Regional Comprehensive Stroke Centre.

Transformative Care

Newly created spaces that are multipurpose and equipped with state-of-the-art teaching/collaboration rooms will allow opportunities for health care workers, surgeons and in some cases, families, to be part of the planning for procedures. Multidisciplinary health care teams will provide patients with a more holistic approach to care.

This innovative approach is patient-centred, adaptable, integrative, and sustainable. Changing how we use spaces will result in better utilization of our resources, lessening patient/operational wait times; ultimately improving patient outcomes.

THE FOUNDATION

For four decades, the mission of Royal Columbian Hospital Foundation has been to raise money to help the hospital save lives, restore health and provide comfort to seriously injured and ill patients of all ages. From our inaugural campaign to raise

funds for the hospital's FIRST CT scanner in 1978, the Foundation and its Board of Directors and Campaign Cabinet Team are poised and prepared for the challenge of raising \$100 million to support the redevelopment project.

Meet the individuals who help us accomplish our objectives:



Campaign Cabinet Leadership

Chair: Sue Paish

Founding CEO, Canada's Digital Technology Supercluster

Cameron Belsher

Partner, Group Head M&A, McCarthy Tetrault LLP

David Wesik

Vice President, Operations & Corporate Development, Wesgroup Properties

Doug Eveneshen

CEO, Stabilization Central Credit Union

Dr. Sukh Brar

Past President, BC Anaesthesiologists Society & Anaesthesiologist, RCH

Dr. Shahzad Karim

Cardiothoracic Surgeon, RCH

Dr. Anson Koo

Chief Psychiatrist, Mental Health and Substance Use Program

Frank Butzelaar

Chief Executive Officer, Seaspan ULC

Graham Walker

Partner, Borden Ladner Gervais

Jeff Norris

President & CEO, RCH Foundation

Jennifer Podmore-Russell

Senior Vice President Operations, Rennie Group

Jonathan Coté

Mayor, City of New Westminster

Kevin Desmond

Chief Executive Officer, TransLink

Kirk McLean

Alumni, Vancouver Canucks

Mike Bonner

Senior Vice President, Regional Head, BC & Yukon, BMO Bank of Montreal

Paul Palmer

Partner, EY

Salima Mawji

Chief Development Officer, RCH Foundation

Salima Remtulla

VP, Operations & Corporate Strategy, Leith Wheeler Investment Counsel Ltd

Tom Sparrow

Chief Project Officer, RCH, Redevelopment

Wade Winkler

Partner, McQuarrie Hunter LLP



Royal Columbian Hospital Foundation Board of Directors

Doug Eveneshen, Chair

CEO, Stabilization
Central Credit Union

Tom Corsie, Vice Chair

Vice President, Real Estate,
Port of Vancouver

Steven Osachoff, Treasurer

Investment Advisor, RBC
Dominion Securities

Colin Galinski, Secretary

Lawyer, Galinski
Pension and Benefits
Law Corporation

Dr. Sukh Brar

Past President, BC
Anaesthesiologists Society
& Anaesthesiologist, RCH

Cameron Belsher

Partner, Group Head
M & A, McCarthy Tetrault

Frank Butzelaar

President & CEO,
Seaspan ULC

Meldy Harris

Chartered Financial
Planner, Sunlife Financial

Larry Kozak

VP, Business Development,
Molecular You Corp

Farid Rohani

Principle, Promerita Group

Catherine Ruby

CFO, Collingwood School

Jennifer

Podmore-Russell

Senior Vice President
Operations, Rennie Group

Dr. William Siu

Neuro and Interventional
Radiologist, RCH;
Past President, BC
Radiological Society

Emily Taylor

Chief Financial Officer,
Surrey City Development
Corporation

Norm Taylor

EVP, Managing Director,
CBRE Ltd (BC Region)

Rana Vig

Entrepreneur; Founder,
100 Year Journey
& CEO Continental
Precious Minerals

Fred Withers

Chief Development
Officer (Ret.), EY

Jeff Norris

President & CEO,
RCH Foundation

WHERE WE ARE NOW...

A \$1.35 billion multi-phase, multi-year transformation of Royal Columbian Hospital is underway. Our vision is to create a world-class hospital: a state-of-the-art facility that provides uncompromising care and remarkable patient experiences.



The redevelopment has received the provincial government's full approval, and change has already begun on the ground. The new facility will allow us to deliver a much more comprehensive range of mental health services to more people, and will speed up access to care.

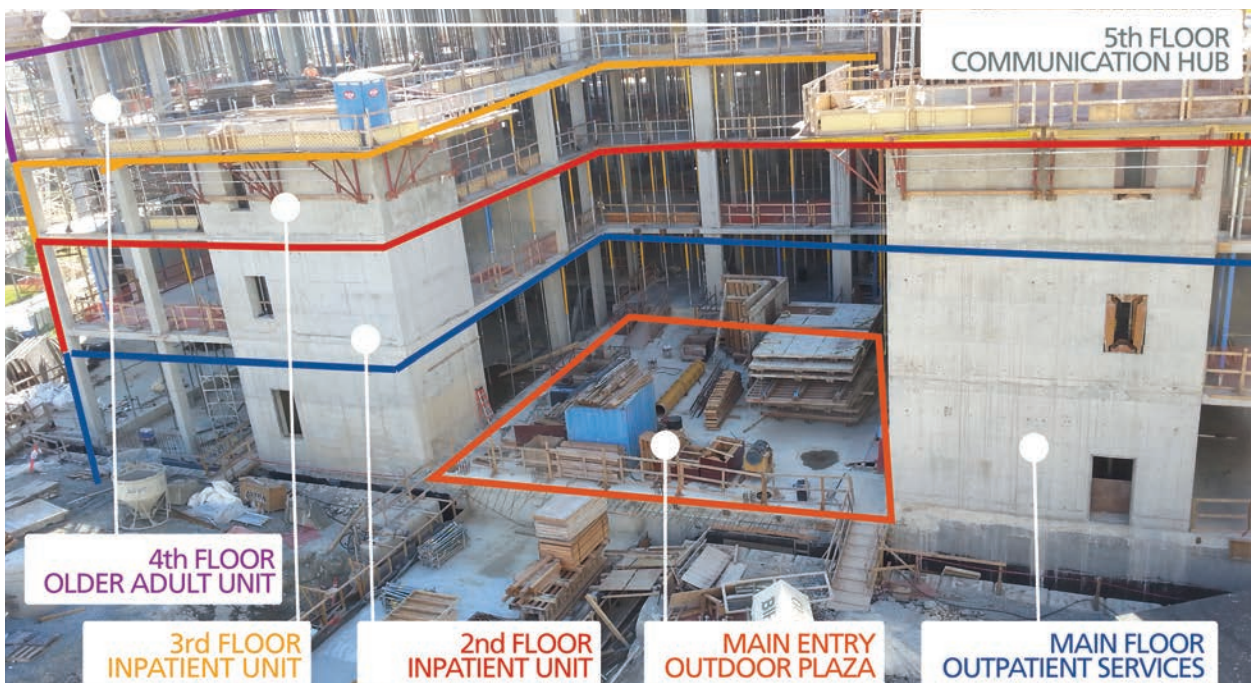
Construction is well underway and we're on budget with time and resources. Each day brings more progress, with the view changing daily—the fifth floor is now framed, with only the upper utility floor left to be built.

Progress Phase 1: New Mental Health and Substance Use (MHSU) Wellness Centre

We've come a long way in a year—from an empty lot one year ago to a four-storey building.



2017 - Empty Lot



Current - MHSU Wellness Centre



The new MHSU Wellness Centre will have:

More than double the number of inpatient beds, from 30 to 75, to treat 800 more patients/year

- Designs adhere to mental health guidelines to ensure patient safety and privacy
- Floors designed to address special needs, e.g., high acuity psychiatric patients and Fraser Health's first Older Adult Psychiatric Unit

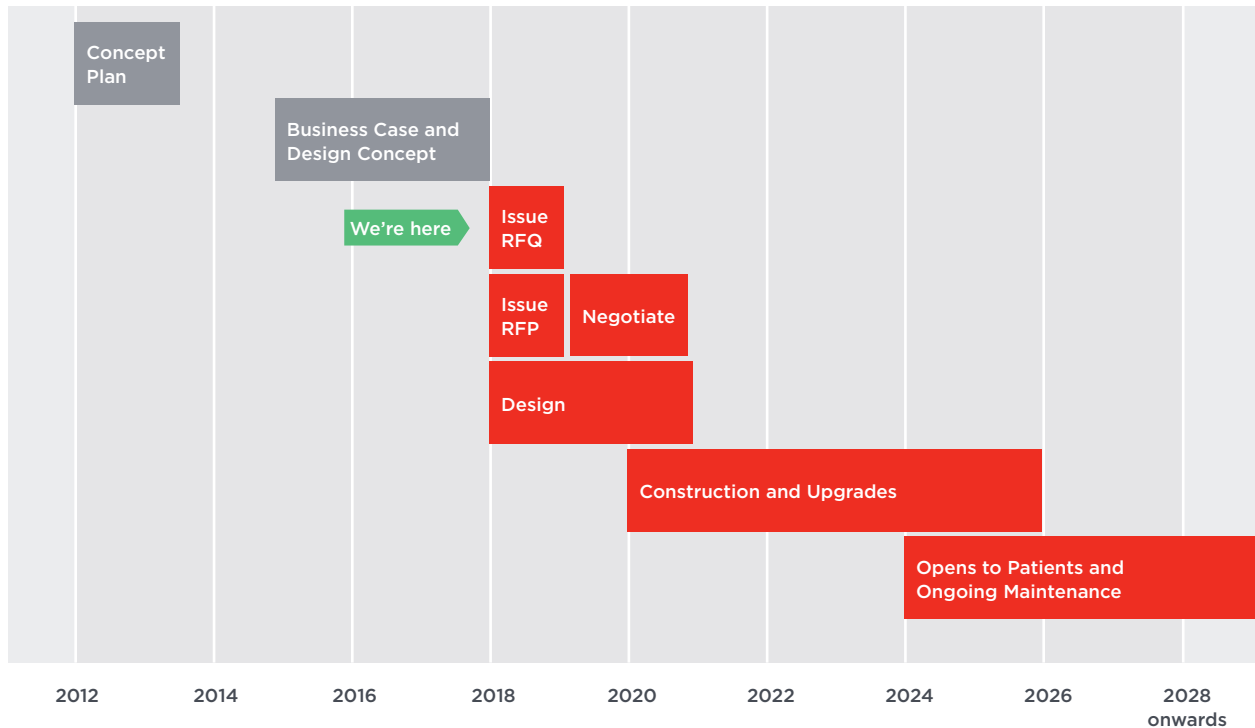
Social Enterprise Café to help people learn work skills

- Welcoming and safe space for patients and families
- Programs and resources to support families and patients

Indoor Therapeutic Garden and Sensory Intervention Rooms

- Calm anxiety, enjoy nature
- Promote mental wellness in safe, secure and private spaces
- Help the transition to community and home life

Phase Two: 2020-2024



In April 2017, the full \$1.35 billion healthcare investment by the province was officially announced. “This is an historic day for the Royal Columbian and for Fraser Health,” said Michael Marchbank, President and Chief Executive officer of Fraser Health. “As a tertiary and quaternary care facility that serves our entire region and in some cases all of B.C., this is an investment in all our patients, clients, residents, staff, and communities. We expect the benefits will be many and far reaching.”

Currently we’re on track to release the request for qualifications to the market this summer or early fall as we formally launch our search for construction partners for Phase 2 and 3. Concurrently the design team is collaborating with clinical teams, operations and patient advisory groups to ensure all needs are being met with the new rebuild.

Understanding the importance of community consultation in the design, the redevelopment team has delivered their plans to the local schools, businesses and community organizations. Audiences as young as kindergarten are included in the process.

We provide the highest level of care to the most critically ill and injured from throughout the Fraser Health region. No other hospital in the province provides this level of care, or offers all these services, on one site.



Planning for the new Acute Care Tower includes:

Together with Phase 1, increase total capacity by 50%, to treat 11,300 more patients each year

Creation of a centralized interventional and surgical “Super Floor” enables delivery of life saving care faster and more efficiently

Welcoming and safe space for patients and families

- New ‘hybrid’ ORs — surgical suites equipped with state of the art imaging technologies like MRIs and X-rays — allowing surgeons to use real time imaging to diagnose, treat, and evaluate procedures and surgery before patients are moved to the recovery room, and to improve the speed and quality of care for complex cases and trauma patients



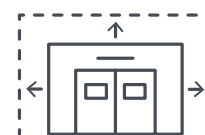
- 5 Interventional Radiology Suites (an increase of 3): More and advanced interventional imaging technologies for stroke and critical care, when just seconds matter to a patient’s outcome and quality of life
- 6 Cardiac Interventional Suites (an increase of 4) for emergency (e.g., stents) and less invasive procedures to repair the heart (e.g., catheterizations)



Include a 62-bed Critical Care floor serving all of Fraser Health, with an ICU, High Acuity Unit, and a Cardiac Surgery Intensive Care Unit



More than double the Emergency Department's space to serve our growing region, including:



Expand and co-locate the maternity, NICU, and pediatric program onto a single floor spanning across two buildings, with dedicated services for mothers, babies, children and youth including:



- 2 dedicated obstetric OR's and recovery rooms
- A 48-bed maternity unit (up from 28 beds, to support the growing population) including 10 post C-section rooms, 10 antepartum rooms for women experiencing pregnancy complications, and 28 single-patient maternity, labour, and delivery rooms to provide families with privacy, dignity and bonding time
- A 24-bed NICU where every family gets their own private room
- A 16-bed pediatric unit (up from 12-beds) where every child gets their own private room

- 4 trauma bays for the most critically ill or injured
- A 49-bed zone for acute patients, a 10-bed zone for low acuity patients, a 6-bed pediatric zone, a 6-bed mental health and substance use zone, and a decontamination zone that treats and isolates people exposed to hazardous chemicals
- A satellite medical imaging unit close to the trauma room, steps away from critical patients
- Quiet rooms and waiting areas for families with considerations for privacy and consultation

Include five floors of 48-bed medical/surgical units with standardized single-patient rooms with:

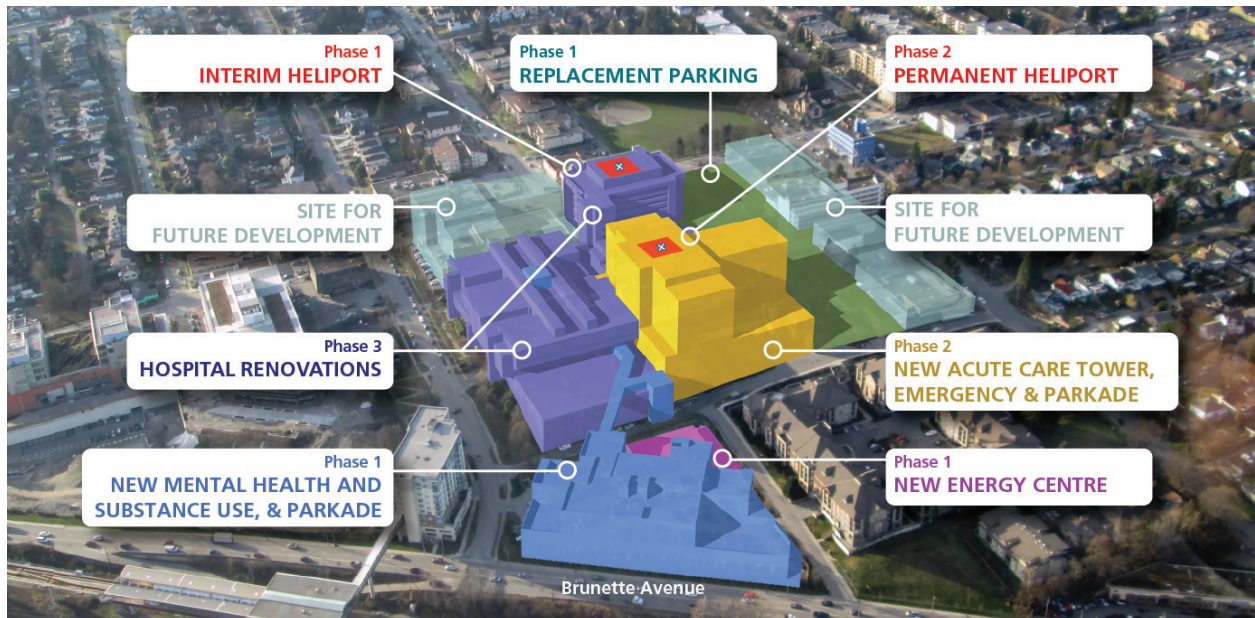


- Patient, staff and family zones to facilitate family involvement in care
- Individually controlled lights and temperature, access to natural light and outdoor views to assist with an improved healing environment

Relocated Heli-port



Phase Three: 2023-2026



The final phase upgrades areas in the Health Care Centre and Columbia Tower to support the beds and services added in phase two.

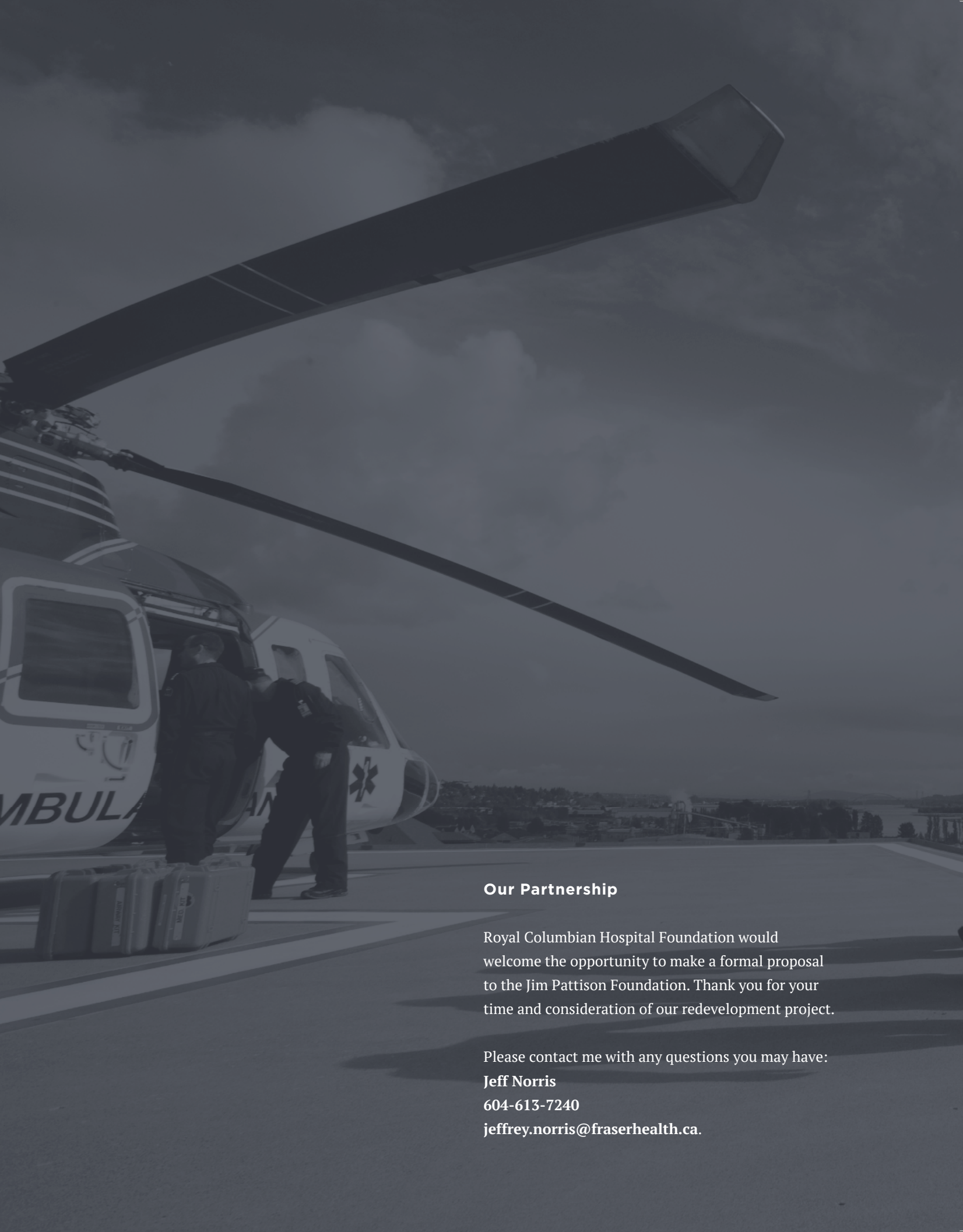
Expansion within existing buildings includes:

Expansion of clinical support spaces such as the Laboratory, Pharmacy, Food Services, Diagnostic Services, Medical Imaging, Ambulatory Care, and more.

Conversion of 4-bed inpatient rooms in Columbia Tower to single-patient or semi-private rooms

Upgrade and move the cafeteria, administration, ambulatory care services

With our redevelopment team collaborating with other redevelopment teams internationally, nationally, provincially and locally, we are guaranteed to have the benefit of lessons learned resulting in the best in the west. As BC's longest-serving hospital, established in 1862, the newly redeveloped Royal Columbian Hospital will be able to support the growing population of the area and meet the complex needs of patients, greatly improving health outcomes.



Our Partnership

Royal Columbian Hospital Foundation would welcome the opportunity to make a formal proposal to the Jim Pattison Foundation. Thank you for your time and consideration of our redevelopment project.

Please contact me with any questions you may have:

Jeff Norris

604-613-7240

jeffrey.norris@fraserhealth.ca



ROYAL COLUMBIAN
Hospital Foundation

330 East Columbia Street
New Westminster, BC V3L 3W7

Charitable Business Number
11912 8866 RR0001